

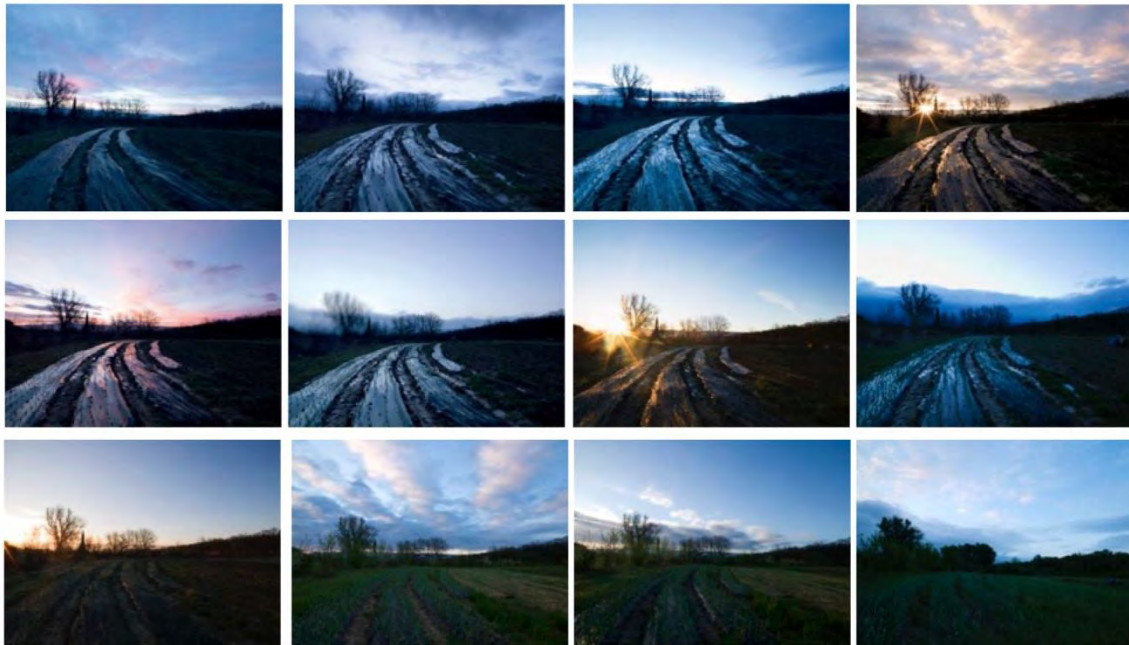
PHILLIPS

PRESS RELEASE

Phillips Announces

DOWN TO EARTH

**A Selling Exhibition of Photographs by Denis Piel
In Support of the Soil Association**



Denis Piel, *Down To Earth* No. Growth @ Sunrise 1-12, 2014

LONDON - 17 JANUARY 2018 - This February, Phillips in London will host *DOWN TO EARTH*, a public selling exhibition of photographs by Denis Piel, in support of the Soil Association. The exhibition, which runs from 5 to 16 February at 30 Berkeley Square, will feature over 40 works that stand together to communicate and address the theme of sustainable living. 10% of the sales of these works will go to the Soil Association, a leading charitable organisation that strives to change the future of food and farming.

“DOWN TO EARTH is a personal body of work, inspired by the return to basics and to express some of my more personal concepts of life, away from the artificial language of fashion and advertising.” denis piel.

This curated selection of photographs from the book of the same name captures a primal, essential connection to the earth, a theme that chimes closely with the values of the Soil Association. Denis Piel draws inspiration from the sustainable and regenerative organic farming practiced at his home at Les Jardins du Château de Padiès, and from the carvings on the château façades of Greek mythological figures depicting fertility and abundance. Photographed over a complete agricultural cycle, fertility and abundance feature heavily across these *storyscapes*, instilling them with a very real sense of erotic, challenging beauty.

Denis Piel's DOWN TO EARTH injects an unexpected visual vocabulary into the subject of the soil, to spark discussion and trigger debate.

Highlights from the Exhibition.



Denis Piel
Down To Earth No.1, 2013



Denis Piel
Down To Earth No.48, 2014



Denis Piel
Down To Earth No.19, 2013



Denis Piel
Down To Earth No.117, 2013

Exhibition 5-16 February | Monday to Friday 10am-6pm
Location: 30 Berkeley Square, London

###

ABOUT PHILLIPS

Phillips is a leading global platform for buying and selling 20th and 21st century art and design. With dedicated expertise in the areas of 20th Century and Contemporary Art, Design, Photographs, Editions, Watches, and Jewelry, Phillips offers professional services and advice on all aspects of collecting. Auctions and exhibitions are held at salerooms in New York, London, Geneva, and Hong Kong, while clients are further served through representative offices based throughout Europe, the United States and Asia. Phillips also offers an online auction platform accessible anywhere in the world. In addition to providing selling and buying opportunities through auction, Phillips brokers private sales and offers assistance with appraisals, valuations, and other financial services.

Visit www.phillips.com for further information.

ABOUT THE SOIL ASSOCIATION

The Soil Association was founded in 1946 by farmers, scientists, doctors and nutritionists to promote the connection between the health of the

soil, food, animals, people and the environment. Today the Soil Association is the UK's leading membership charity campaigning for healthy, humane and sustainable food, farming and land use. Its Chief Executive is Helen Browning, and Chair of Trustees is Gabriel Scally.

ABOUT DENIS PIEL

denis piel (b. 1944, France), raised in Australia is an internationally acclaimed photographer, known for his groundbreaking editorial work during fashion's halcyon days of 1980's Vogue, GQ and Vanity Fair. Piel is widely acknowledged for illustrating a sense of reality in what might otherwise be an ordinary fashion shoot. Piel's work has always raised an eyebrow; not only for its brave portrayals of his subjects but for its fresh, almost raw honesty. Piel's eye is now trained on Mother Earth, as sensual a subject as he has ever encountered.

PRESS CONTACTS:

LONDON - Katie Carder, *Press Manager, EMEA*

kcarder@phillips.com

+44 20 7901 7938

HEADQUARTERS: LONDON - 30 Berkeley Square, London W1J 6EX | NEW YORK - 450 Park Avenue, New York, NY 10022

VISIT US AT: www.phillips.com

FOLLOW US ON: [Twitter](#) | [Instagram](#) | [Vimeo](#) | [Facebook](#) | [Pinterest](#) | [Tumblr](#) | [LinkedIn](#)